

Scaled data based on original data using
LM-79-08 Approved Method: Electrical and Photometric Measurements of Solid-
State Lighting Products

Test Report Prepared for
Cooper Lighting Solutions
(formerly Eaton)

Brand: INVUE

Report Number: P149383

Luminaire Tested: **VWM-F04-LED-E1-SL2-HSS-8030**

Issue Date: 03/03/2020

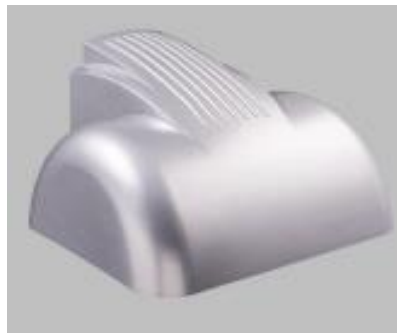
Test Information

Test Method: LM-79-08
Report Number: P149383
REPORT IS SCALED FROM IESNA LM-79-08 TEST DATA (P33726)
Test Lab: INNOVATION CENTER-P3
Issue Date: 03/03/2020
Manufacturer: COOPER LIGHTING SOLUTIONS (FORMERLY EATON)
Product Line: INVUE
Catalog Number: VWM-F04-LED-E1-SL2-HSS-8030
Description: VISION WALL MEDIUM LED LUMINAIRE
(4) LIGHTBARS WITH AccuLED OPTICS - TYPE 2 W/ SPILL LIGHT CONTROL AND HOUSE SIDE SHIELD
Light Source: (28) 3000K CCT, 80 CRI LEDs
Ballast/Driver: -

Summary

Lumens per Lamp: N/A
Luminaire Lumens: 5110.1 lumens
Efficiency: N/A
Efficacy: 50.0 lumens/watt
Luminous Opening: Rectangular (W 0.67' x L: 1' x H: 0')
IES Classification: Type II - Short - Non-Cutoff
BUG Rating: B0 - U0 - G2

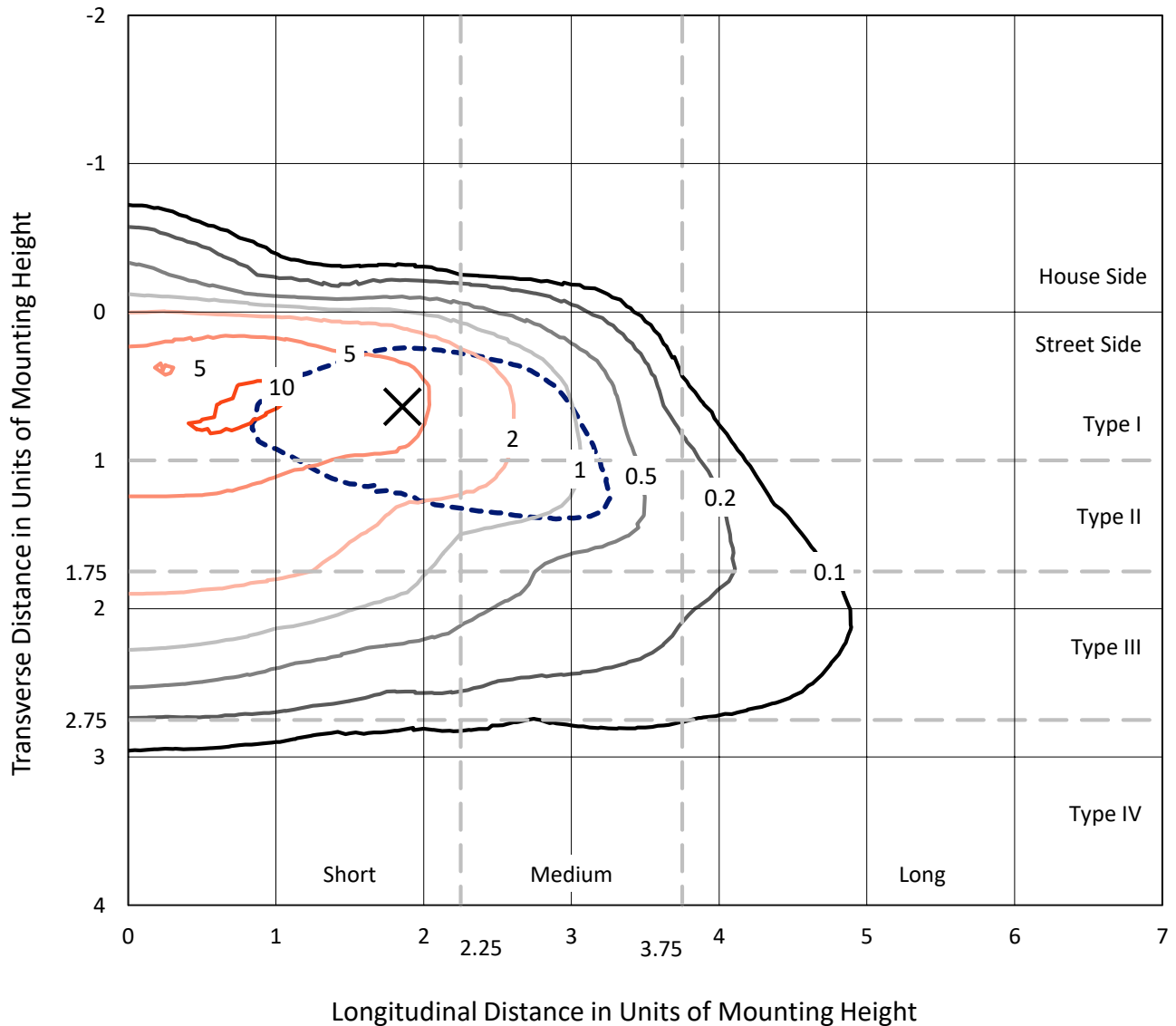
Input Watts (W): 102.2
Input Voltage (V): NR
Input Current (Ain): NR
Voltage Rise (V): NR
Power Factor: NR
Total Harmonic Distortion (THDi): NR
Frequency (hertz): 60
Stabilization Time: NR
Operation Time: NR
Ambient Temperature (°C): NR
Test Distance: 25 FT



REPORT NUMBER: P149383
 CATALOG NUMBER: VWM-F04-LED-E1-SL2-HSS-8030

Iso-Footcandle Lines of Horizontal Illumination

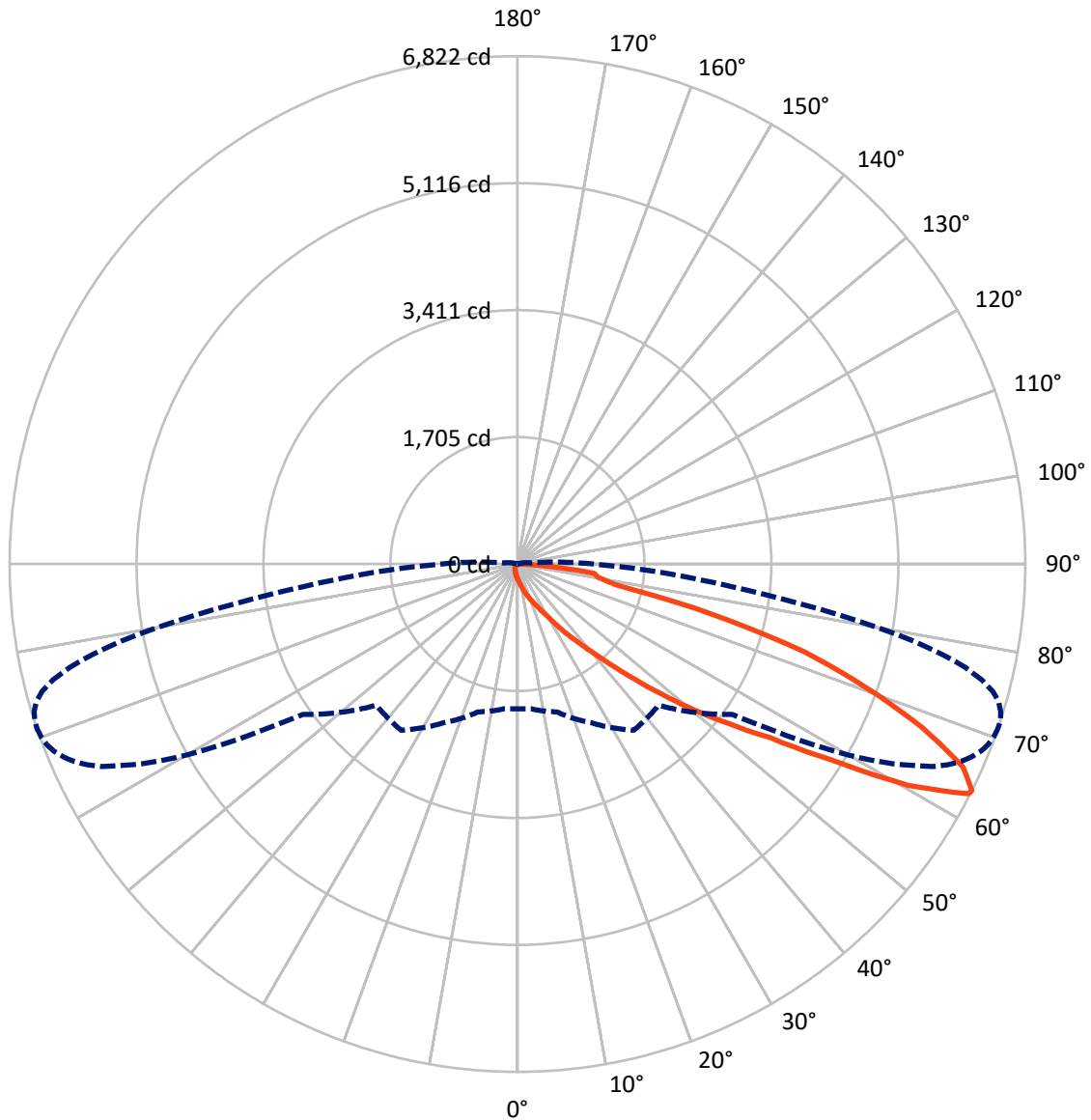
× Max cd
 - - - 1/2 Max cd



Based on 10 foot mounting height. Maximum calculated value = 10.8 fc
 Type II - Short - Non-Cutoff

REPORT NUMBER: P149383
CATALOG NUMBER: VWM-F04-LED-E1-SL2-HSS-8030

Luminous Intensity Polar Plot



— Vertical Plane Through 71-Deg Lateral - - - Horizontal Cone Through 63-Deg Vertical

REPORT NUMBER: P149383

CATALOG NUMBER: VWM-F04-LED-E1-SL2-HSS-8030

FLUX DISTRIBUTION:

		Downward	Upward	Total
House Side	Lumens	108.5	0.0	108.5
	% Fixture	2.1	0.0	2.1
Street Side	Lumens	5001.6	0.0	5001.6
	% Fixture	97.9	0.0	97.9
Total	Lumens	5110.1	0.0	5110.1
	% Fixture	100.0	0.0	100.0

Coefficient of Utilization

ZONAL LUMENS:

Zone	Lumens	% Fixture
0°-10°	21.7	0.4
10°-20°	84.0	1.6
20°-30°	170.7	3.3
30°-40°	417.0	8.2
40°-50°	932.5	18.2
50°-60°	1311.2	25.7
60°-70°	1541.9	30.2
70°-80°	556.7	10.9
80°-90°	74.5	1.5
90°-100°	0.0	0.0
100°-110°	0.0	0.0
110°-120°	0.0	0.0
120°-130°	0.0	0.0
130°-140°	0.0	0.0
140°-150°	0.0	0.0
150°-160°	0.0	0.0
160°-170°	0.0	0.0
170°-180°	0.0	0.0
0°-90°	5110.1	100.0
0°-180°	5110.1	100.0



REPORT NUMBER: P149383

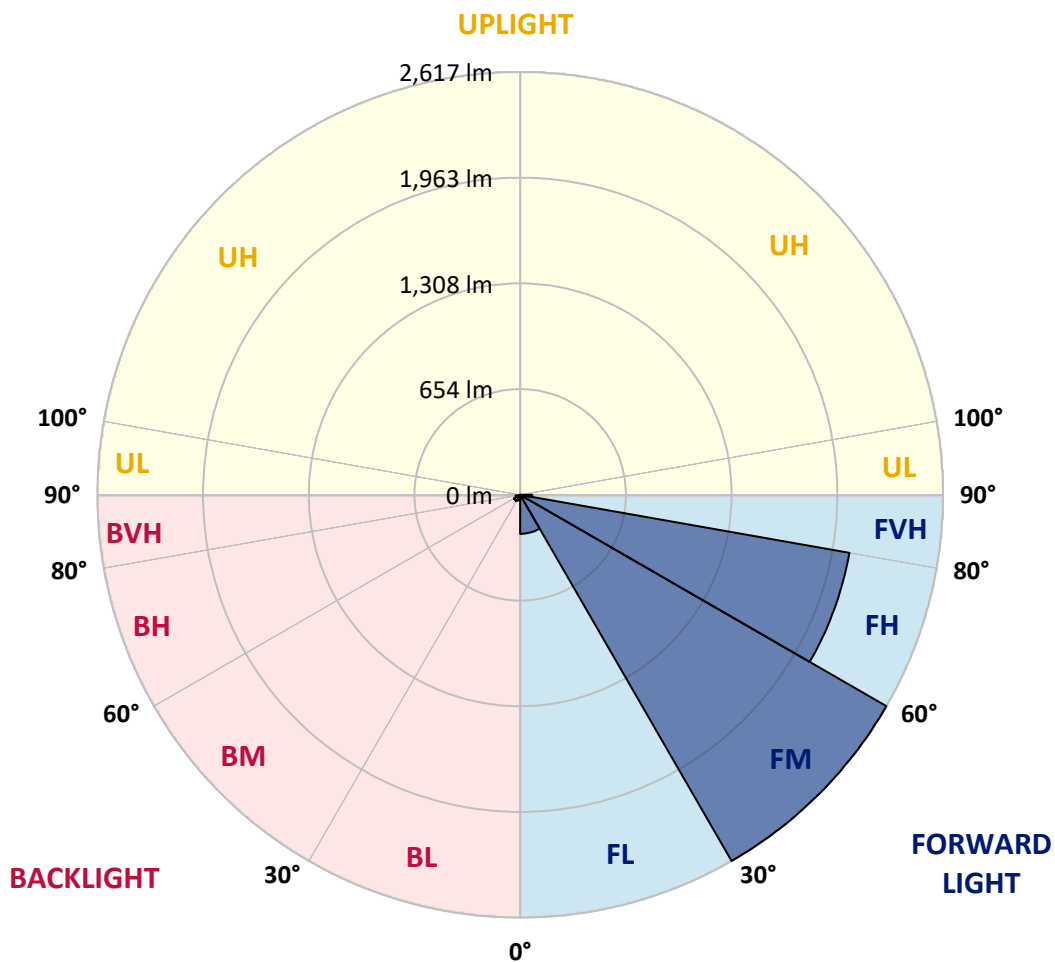
CATALOG NUMBER: VWM-F04-LED-E1-SL2-HSS-8030

LUMINAIRE CLASSIFICATION SYSTEM LUMEN TABLE AND BUG RATING:

Zone		Lumens	% Fixture	Zone Rating/Lumen Limit		
				B	U	G
FL	(0°-30°)	241.5	4.7			
FM	(30°-60°)	2616.9	51.2			
FH	(60°-80°)	2068.9	40.5			G2/5000
FVH	(80°-90°)	74.3	1.5			G1/100
BL	(0°-30°)	34.9	0.7	B0/110		
BM	(30°-60°)	43.7	0.9	B0/220		
BH	(60°-80°)	29.7	0.6	B0/110		G0/110
BVH	(80°-90°)	0.2	0.0			G0/10
UL	(90°-100°)	0.0	0.0		U0/0	
UH	(100°-180°)	0.0	0.0		U0/0	

BUG Rating: B0-U0-G2

Type II Short





REPORT NUMBER: P149383
 CATALOG NUMBER: VWM-F04-LED-E1-SL2-HSS-8030

CANDELA DISTRIBUTION (FULL):

	0°	5°	15°	25°	35°	45°	55°	56°	57°	58°	59°
0°	196.0	196.0	196.0	196.0	196.0	196.0	196.0	196.0	196.0	196.0	196.0
2.5°	256.4	259.2	257.3	252.7	247.1	239.7	233.2	233.2	232.2	229.5	230.4
5°	336.3	337.2	333.5	322.4	312.1	296.3	278.7	276.8	275.0	272.2	271.3
7.5°	414.3	418.0	414.3	402.2	381.8	357.7	329.8	327.0	321.4	321.4	317.7
10°	494.2	494.2	490.5	476.6	458.0	423.6	388.3	383.7	377.2	375.3	369.7
12.5°	550.9	550.9	549.0	541.6	526.7	496.1	453.3	448.7	440.3	437.5	431.0
15°	573.2	573.2	574.1	580.6	581.5	567.6	523.0	519.3	510.9	503.5	500.7
17.5°	587.1	586.2	586.2	595.5	612.2	621.5	592.7	589.0	579.7	576.0	566.7
20°	617.8	615.9	610.3	610.3	626.1	658.6	658.6	657.7	647.5	644.7	640.1
22.5°	663.3	661.4	644.7	630.8	638.2	679.1	717.2	715.3	711.6	707.9	705.1
25°	737.6	731.1	702.3	661.4	654.9	698.6	761.8	766.4	769.2	769.2	771.1
27.5°	850.0	841.7	790.6	714.4	685.6	730.2	811.0	820.3	828.7	830.5	838.9
30°	1006.1	991.2	917.8	806.4	740.4	776.6	883.5	893.7	905.8	909.5	922.5
32.5°	1262.5	1254.1	1183.5	1016.3	875.1	867.7	984.7	997.7	1013.5	1020.0	1035.8
35°	1652.7	1654.5	1596.9	1446.4	1251.3	1149.1	1165.9	1177.0	1182.6	1202.1	1210.5
37.5°	1917.4	1922.1	1935.1	1875.6	1736.3	1632.2	1501.2	1513.3	1484.5	1487.3	1488.2
40°	2062.3	2077.2	2153.4	2211.0	2199.8	2139.4	2034.5	2041.0	1987.1	1975.0	1916.5
42.5°	2159.0	2178.5	2300.2	2478.5	2569.6	2624.4	2600.2	2597.4	2555.6	2539.8	2490.6
45°	2219.3	2237.0	2390.3	2653.2	2863.1	3022.9	3088.9	3096.3	3061.0	3045.2	3004.3
47.5°	2216.5	2237.0	2401.4	2718.2	3027.5	3283.0	3468.8	3478.1	3499.5	3485.5	3488.3
50°	2093.9	2113.4	2278.8	2607.6	2979.2	3401.9	3741.9	3771.7	3806.0	3829.3	3840.4
52.5°	1945.3	1959.2	2106.0	2418.1	2773.0	3352.7	3903.6	3954.7	4005.8	4049.4	4080.1
55°	1890.5	1906.3	2021.5	2280.6	2607.6	3146.5	3978.8	4054.1	4126.5	4198.1	4256.6
57.5°	1919.3	1934.1	2016.8	2215.6	2509.2	2929.1	4000.2	4117.2	4236.2	4352.3	4467.5
60°	2025.2	2041.0	2111.6	2276.0	2483.2	2803.7	3916.6	4110.7	4308.6	4511.1	4701.6
62.5°	1983.4	1989.9	2093.9	2381.9	2669.0	2696.8	3612.8	3884.1	4186.0	4498.1	4805.6
63°	1943.4	1950.9	2056.8	2353.1	2725.6	2681.0	3519.0	3805.1	4123.7	4460.0	4794.5
65°	1762.3	1763.2	1844.0	2078.1	2662.5	2708.9	3100.9	3374.1	3740.1	4143.3	4565.9
67.5°	1315.4	1308.9	1387.0	1565.3	2090.2	2709.8	2661.5	2814.8	3069.4	3427.0	3806.0
70°	466.3	456.1	582.5	829.6	1302.4	2216.5	2287.2	2297.4	2368.0	2561.2	2799.0
72.5°	151.4	154.2	185.8	303.8	600.1	1491.9	2070.7	2039.1	2020.5	2019.6	2051.2
75°	60.4	61.3	74.3	134.7	269.4	719.0	1813.4	1831.0	1837.5	1846.8	1857.0
77.5°	28.8	31.6	41.8	75.2	133.8	355.8	1297.8	1447.4	1532.8	1598.8	1638.7
80°	10.2	12.1	23.2	46.4	62.2	163.5	683.7	824.9	950.3	1112.0	1251.3
82.5°	0.0	0.0	4.6	32.5	34.4	66.0	280.6	328.9	376.2	487.7	626.1
85°	0.0	0.0	0.0	9.3	10.2	11.1	94.8	114.3	128.2	149.6	172.8
87.5°	0.0	0.0	0.0	0.0	0.0	0.0	0.9	2.8	5.6	13.9	21.4
90°	0.0	0.0	0.0	0.0	0.0	0.0	0.0	0.0	0.0	0.0	0.0



REPORT NUMBER: P149383
 CATALOG NUMBER: VWM-F04-LED-E1-SL2-HSS-8030

CANDELA DISTRIBUTION (continued):

	60°	61°	62°	64°	65°	66°	67°	68°	69°	70°	71°
0°	196.0	196.0	196.0	196.0	196.0	196.0	196.0	196.0	196.0	196.0	196.0
2.5°	228.5	227.6	227.6	225.7	224.8	223.0	222.0	219.2	218.3	218.3	218.3
5°	270.3	266.6	264.8	260.1	257.3	256.4	251.8	249.9	247.1	248.0	243.4
7.5°	316.8	310.3	307.5	301.0	299.1	292.6	290.8	286.1	283.3	277.8	275.9
10°	367.9	359.5	354.9	344.7	341.9	337.2	331.6	326.1	321.4	315.9	313.1
12.5°	426.4	419.0	415.3	401.3	394.8	388.3	380.9	373.5	366.0	361.4	354.9
15°	495.1	483.1	479.4	466.3	455.2	446.8	436.6	427.3	421.8	412.5	406.0
17.5°	563.0	550.9	548.1	528.6	516.5	510.9	499.8	487.7	477.5	468.2	458.0
20°	630.8	622.4	615.0	596.4	583.4	574.1	559.2	547.2	538.8	525.8	512.8
22.5°	698.6	690.2	684.7	665.2	653.1	640.1	627.1	614.1	602.0	586.2	571.3
25°	768.3	762.7	759.9	742.3	731.1	719.0	706.0	691.2	676.3	658.6	642.9
27.5°	840.7	842.6	837.0	833.3	821.2	812.9	792.4	782.2	771.1	749.7	730.2
30°	932.7	938.3	936.4	939.2	931.8	926.2	910.4	897.4	884.4	864.0	841.7
32.5°	1048.8	1056.3	1060.0	1070.2	1066.5	1064.6	1060.0	1041.4	1032.1	996.8	987.5
35°	1228.1	1224.4	1240.2	1248.6	1244.8	1243.0	1237.4	1227.2	1216.0	1191.0	1167.7
37.5°	1461.3	1465.0	1470.6	1453.9	1442.7	1441.8	1425.1	1414.8	1399.0	1371.2	1343.3
40°	1888.6	1865.4	1839.4	1768.8	1738.1	1720.5	1671.2	1657.3	1630.4	1592.3	1563.5
42.5°	2444.1	2420.9	2342.9	2224.9	2161.7	2074.4	2034.5	1985.2	1947.1	1884.9	1851.5
45°	2996.0	2929.1	2919.8	2782.3	2704.3	2589.1	2517.5	2434.9	2348.5	2266.7	2207.3
47.5°	3461.4	3446.5	3401.0	3317.4	3244.9	3148.3	3056.3	2929.1	2839.9	2723.8	2616.9
50°	3833.9	3833.0	3816.3	3767.9	3707.6	3629.5	3548.7	3440.9	3339.7	3197.6	3083.3
52.5°	4112.6	4127.5	4133.0	4118.2	4094.9	4026.2	3985.3	3895.2	3809.7	3689.0	3565.4
55°	4317.0	4371.8	4399.7	4431.2	4424.7	4400.6	4398.7	4340.2	4301.2	4205.5	4118.2
57.5°	4569.7	4659.8	4746.2	4899.4	4905.0	4958.9	4986.8	5014.6	5022.1	4984.0	4955.2
60°	4891.1	5075.0	5238.5	5559.0	5642.6	5774.5	5860.0	5952.9	6031.9	6038.4	6036.5
62.5°	5117.8	5401.1	5664.9	6140.6	6303.1	6455.5	6569.8	6659.9	6714.7	6770.4	6796.4
63°	5124.3	5434.5	5715.1	6205.6	6376.5	6521.4	6630.1	6713.7	6771.3	6804.8	6821.5
65°	4967.3	5343.5	5677.9	6166.6	6327.3	6473.1	6529.8	6584.6	6612.5	6625.5	6576.3
67.5°	4210.1	4578.0	4968.2	5514.4	5651.9	5826.6	5873.0	5900.9	5913.9	5911.1	5869.3
70°	3148.3	3456.7	3890.6	4514.8	4696.9	4867.9	4973.8	5019.3	5034.1	5029.5	4967.3
72.5°	2198.0	2379.1	2736.8	3431.7	3679.7	3898.9	4029.9	4097.7	4111.7	4083.8	4026.2
75°	1845.9	1855.2	1936.0	2315.9	2548.2	2782.3	2930.0	2972.7	2944.9	2860.3	2713.6
77.5°	1648.0	1668.4	1668.4	1725.1	1770.6	1835.7	1849.6	1745.6	1624.8	1468.7	1342.4
80°	1382.3	1453.9	1504.0	1545.8	1550.5	1537.5	1503.1	1444.6	1351.7	1232.8	1100.8
82.5°	839.8	981.0	1038.6	1254.1	1360.0	1431.6	1426.0	1348.0	1277.3	1153.8	1041.4
85°	211.8	228.5	248.0	322.4	361.4	441.3	491.4	514.7	523.0	480.3	434.8
87.5°	20.4	13.9	23.2	17.7	25.1	18.6	25.1	23.2	28.8	30.7	33.4
90°	0.0	0.0	0.0	0.0	0.0	0.0	0.0	0.0	0.0	0.0	0.0



REPORT NUMBER: P149383
 CATALOG NUMBER: VWM-F04-LED-E1-SL2-HSS-8030

CANDELA DISTRIBUTION (continued):

	72°	73°	74°	75°	76°	77°	78°	79°	80°	81°	82°
0°	196.0	196.0	196.0	196.0	196.0	196.0	196.0	196.0	196.0	196.0	196.0
2.5°	216.5	215.5	214.6	213.7	212.7	211.8	209.9	209.9	208.1	207.2	206.2
5°	240.6	238.7	237.8	236.0	233.2	231.3	228.5	224.8	222.0	221.1	219.2
7.5°	271.3	266.6	264.8	262.0	258.3	252.7	249.0	246.2	241.5	238.7	233.2
10°	305.6	301.0	295.4	289.8	284.3	277.8	273.1	269.4	262.0	258.3	251.8
12.5°	349.3	340.9	334.4	327.0	319.6	312.1	306.6	295.4	288.9	280.6	275.0
15°	393.9	386.5	379.0	369.7	358.6	346.5	340.9	330.7	322.4	309.4	301.9
17.5°	447.8	433.8	422.7	411.5	401.3	390.2	379.0	363.2	351.2	340.0	325.1
20°	500.7	484.0	471.9	457.1	442.2	424.5	411.5	400.4	383.7	368.8	353.0
22.5°	557.4	540.7	521.2	506.3	485.9	471.9	454.3	435.7	419.0	399.5	380.0
25°	626.1	608.5	586.2	566.7	543.5	523.9	502.6	481.2	460.8	438.5	413.4
27.5°	710.7	692.1	667.9	644.7	614.1	589.9	569.5	540.7	514.7	486.8	458.0
30°	817.5	797.1	767.3	733.9	703.2	676.3	647.5	609.4	580.6	547.2	510.0
32.5°	956.9	932.7	892.8	861.2	823.1	787.8	747.8	709.7	668.9	625.2	582.5
35°	1132.4	1110.1	1063.7	1017.2	975.4	933.6	883.5	839.8	782.2	729.2	674.4
37.5°	1314.5	1274.6	1231.8	1181.7	1129.6	1079.5	1018.2	957.8	891.8	834.2	765.5
40°	1522.6	1474.3	1439.0	1385.1	1311.7	1240.2	1183.5	1108.3	1025.6	948.5	867.7
42.5°	1807.8	1753.9	1690.7	1609.0	1556.0	1472.4	1399.0	1309.9	1201.2	1114.8	1017.2
45°	2137.6	2064.2	2002.9	1923.9	1859.8	1755.8	1670.3	1551.4	1442.7	1329.4	1210.5
47.5°	2513.8	2422.8	2333.6	2255.6	2153.4	2051.2	1942.5	1816.2	1676.8	1552.3	1411.1
50°	2945.8	2816.7	2693.1	2592.8	2452.5	2334.5	2216.5	2074.4	1920.2	1777.1	1616.4
52.5°	3426.1	3276.5	3113.0	2958.8	2796.2	2644.8	2502.7	2339.2	2167.3	1992.7	1813.4
55°	4005.8	3893.4	3701.1	3505.0	3287.7	3085.1	2902.1	2699.6	2490.6	2261.1	2072.6
57.5°	4913.4	4858.6	4697.9	4501.8	4218.5	3972.3	3662.0	3414.0	3111.2	2795.3	2551.9
60°	6143.3	6075.5	5985.4	5826.6	5601.8	5267.3	4925.5	4539.9	4079.2	3641.6	3226.4
62.5°	6799.2	6775.1	6701.7	6592.0	6382.1	6118.3	5773.6	5350.0	4829.8	4298.4	3768.9
63°	6818.7	6788.1	6724.9	6613.4	6428.5	6173.1	5834.9	5423.4	4914.3	4372.7	3832.0
65°	6554.9	6542.8	6478.7	6357.0	6230.7	6035.6	5773.6	5419.7	4992.3	4480.5	3942.6
67.5°	5813.6	5777.3	5678.9	5641.7	5553.4	5417.8	5218.1	4974.7	4669.1	4266.8	3802.3
70°	4917.1	4863.2	4739.7	4673.7	4565.9	4480.5	4358.8	4185.1	3996.5	3715.9	3369.4
72.5°	3966.7	3855.3	3741.9	3570.1	3419.6	3267.2	3132.5	3009.9	2802.7	2689.4	2426.5
75°	2576.1	2373.5	2179.4	1919.3	1685.2	1478.0	1276.4	1174.2	961.5	875.1	751.5
77.5°	1222.5	1109.2	956.9	838.9	688.4	562.0	458.9	344.7	270.3	211.8	161.6
80°	986.6	890.9	798.9	692.1	578.8	461.7	353.9	264.8	187.7	130.1	92.0
82.5°	879.7	775.7	662.4	589.0	511.9	419.0	343.7	280.6	207.2	151.4	103.1
85°	341.9	288.0	222.0	181.2	141.2	116.1	105.0	72.5	56.7	44.6	34.4
87.5°	29.7	24.2	19.5	13.0	13.9	7.4	8.4	5.6	4.6	4.6	3.7
90°	0.0	0.0	0.0	0.0	0.0	0.0	0.0	0.0	0.0	0.0	0.0



REPORT NUMBER: P149383

CATALOG NUMBER: VWM-F04-LED-E1-SL2-HSS-8030

CANDELA DISTRIBUTION (continued):

	83°	84°	85°	86°	87°	88°	89°	90°	95°	105°	115°
0°	196.0	196.0	196.0	196.0	196.0	196.0	196.0	196.0	196.0	196.0	196.0
2.5°	205.3	204.4	203.4	201.6	201.6	199.7	198.8	197.9	193.2	183.0	174.6
5°	215.5	213.7	211.8	209.0	207.2	204.4	202.5	199.7	189.5	170.0	153.3
7.5°	230.4	226.7	223.9	218.3	215.5	211.8	209.0	204.4	187.7	157.9	134.7
10°	248.0	241.5	236.9	230.4	224.8	220.2	215.5	209.0	185.8	144.9	118.0
12.5°	269.4	262.0	252.7	245.3	237.8	231.3	224.8	216.5	183.0	133.8	105.0
15°	290.8	279.6	273.1	262.9	252.7	243.4	234.1	226.7	183.9	121.7	93.8
17.5°	314.9	303.8	289.8	278.7	267.5	255.5	244.3	229.5	179.3	112.4	85.5
20°	338.1	322.4	309.4	295.4	279.6	264.8	250.8	237.8	175.6	103.1	78.0
22.5°	363.2	344.7	327.9	310.3	290.8	274.0	257.3	240.6	169.1	94.8	71.5
25°	393.9	372.5	348.4	327.0	306.6	286.1	264.8	244.3	162.6	87.3	66.9
27.5°	431.0	403.2	379.0	352.1	323.3	297.3	274.0	251.8	156.1	81.8	62.2
30°	478.4	445.9	411.5	377.2	346.5	316.8	284.3	256.4	149.6	76.2	57.6
32.5°	541.6	500.7	458.9	419.0	378.1	340.0	305.6	269.4	145.8	71.5	53.0
35°	625.2	572.3	521.2	471.0	421.8	375.3	330.7	289.8	145.8	66.0	47.4
37.5°	704.2	642.9	577.8	515.6	457.1	403.2	350.2	301.0	138.4	61.3	42.7
40°	789.6	716.2	640.1	566.7	496.1	429.2	368.8	312.1	131.9	55.7	38.1
42.5°	920.6	827.7	728.3	642.9	558.3	475.6	400.4	333.5	123.6	50.2	33.4
45°	1092.5	974.5	857.4	753.4	645.6	544.4	455.2	372.5	121.7	45.5	28.8
47.5°	1276.4	1137.1	999.6	866.7	740.4	622.4	515.6	416.2	121.7	40.9	25.1
50°	1459.4	1284.8	1138.0	983.8	841.7	702.3	575.0	461.7	122.6	37.2	20.4
52.5°	1624.8	1438.1	1273.6	1095.3	938.3	776.6	638.2	506.3	120.8	32.5	16.7
55°	1854.2	1635.0	1444.6	1247.6	1063.7	881.6	724.6	573.2	121.7	28.8	13.9
57.5°	2276.9	2019.6	1790.1	1531.9	1320.1	1085.0	894.6	710.7	132.8	24.2	10.2
60°	2883.6	2549.1	2226.8	1911.8	1642.4	1362.8	1115.7	899.3	156.1	19.5	7.4
62.5°	3291.4	2853.8	2469.2	2121.8	1808.7	1516.1	1246.7	1000.5	171.9	15.8	4.6
63°	3333.2	2880.8	2494.3	2135.7	1816.2	1523.5	1252.3	1007.9	172.8	14.9	4.6
65°	3412.1	2927.2	2508.2	2138.5	1808.7	1513.3	1248.6	1007.0	174.6	12.1	3.7
67.5°	3322.0	2855.7	2427.4	2058.6	1743.7	1452.9	1202.1	969.9	173.7	8.4	2.8
70°	2970.9	2584.4	2208.2	1864.5	1578.3	1315.4	1094.3	884.4	159.8	5.6	1.9
72.5°	2181.2	1918.3	1626.6	1378.6	1189.1	987.5	842.6	664.2	123.6	3.7	0.9
75°	646.6	589.0	495.1	436.6	385.5	318.6	283.3	221.1	63.2	1.9	0.0
77.5°	129.1	117.1	105.0	95.7	90.1	77.1	73.4	60.4	26.0	0.9	0.0
80°	67.8	55.7	47.4	41.8	36.2	29.7	25.1	20.4	4.6	0.0	0.0
82.5°	65.0	43.7	31.6	26.0	22.3	17.7	13.9	10.2	2.8	0.0	0.0
85°	24.2	18.6	13.9	11.1	9.3	8.4	6.5	5.6	0.0	0.0	0.0
87.5°	3.7	2.8	2.8	1.9	1.9	0.9	0.9	0.9	0.0	0.0	0.0
90°	0.0	0.0	0.0	0.0	0.0	0.0	0.0	0.0	0.0	0.0	0.0



REPORT NUMBER: P149383
 CATALOG NUMBER: VWM-F04-LED-E1-SL2-HSS-8030

CANDELA DISTRIBUTION (continued):

	125°	135°	145°	155°	165°	175°	180°
0°	196.0	196.0	196.0	196.0	196.0	196.0	196.0
2.5°	166.3	158.9	155.1	150.5	150.5	149.6	151.4
5°	138.4	128.2	120.8	115.2	116.1	113.3	114.3
7.5°	117.1	106.8	100.3	96.6	95.7	94.8	94.8
10°	101.3	92.0	86.4	83.6	82.7	82.7	82.7
12.5°	90.1	80.8	76.2	74.3	74.3	73.4	73.4
15°	80.8	73.4	68.7	66.9	66.9	66.0	66.9
17.5°	73.4	66.0	62.2	60.4	60.4	59.5	59.5
20°	66.9	60.4	56.7	53.9	53.9	53.0	53.9
22.5°	61.3	54.8	50.2	48.3	47.4	46.4	47.4
25°	55.7	49.2	44.6	41.8	40.9	40.9	39.9
27.5°	51.1	44.6	39.0	36.2	35.3	35.3	34.4
30°	46.4	39.0	33.4	30.7	29.7	29.7	29.7
32.5°	41.8	33.4	28.8	26.0	25.1	25.1	25.1
35°	37.2	28.8	24.2	21.4	20.4	20.4	20.4
37.5°	31.6	24.2	18.6	16.7	15.8	14.9	14.9
40°	26.9	18.6	13.9	12.1	10.2	10.2	10.2
42.5°	22.3	14.9	10.2	7.4	6.5	5.6	6.5
45°	18.6	11.1	6.5	3.7	2.8	2.8	2.8
47.5°	14.9	7.4	2.8	0.9	0.9	0.9	0.9
50°	11.1	4.6	0.9	0.0	0.0	0.9	0.9
52.5°	8.4	2.8	0.0	0.0	0.0	0.0	0.0
55°	4.6	0.9	0.0	0.0	0.0	0.0	0.0
57.5°	2.8	0.0	0.0	0.0	0.0	0.0	0.0
60°	1.9	0.0	0.0	0.0	0.0	0.0	0.0
62.5°	0.9	0.0	0.0	0.0	0.0	0.0	0.0
63°	0.9	0.0	0.0	0.0	0.0	0.0	0.0
65°	0.9	0.0	0.0	0.0	0.0	0.0	0.0
67.5°	0.0	0.0	0.0	0.0	0.0	0.0	0.0
70°	0.0	0.0	0.0	0.0	0.0	0.0	0.0
72.5°	0.0	0.0	0.0	0.0	0.0	0.0	0.0
75°	0.0	0.0	0.0	0.0	0.0	0.0	0.0
77.5°	0.0	0.0	0.0	0.0	0.0	0.0	0.0
80°	0.0	0.0	0.0	0.0	0.0	0.0	0.0
82.5°	0.0	0.0	0.0	0.0	0.0	0.0	0.0
85°	0.0	0.0	0.0	0.0	0.0	0.0	0.0
87.5°	0.0	0.0	0.0	0.0	0.0	0.0	0.0
90°	0.0	0.0	0.0	0.0	0.0	0.0	0.0

(END OF REPORT)